

51B



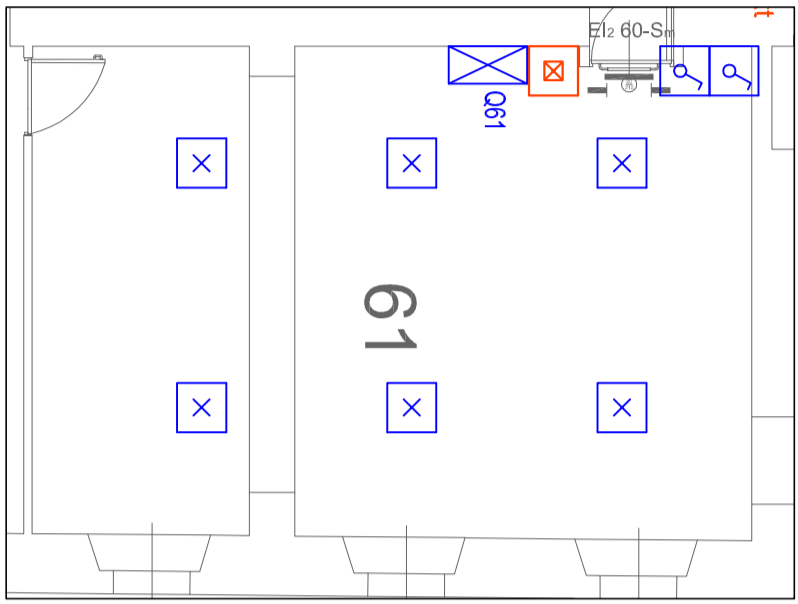
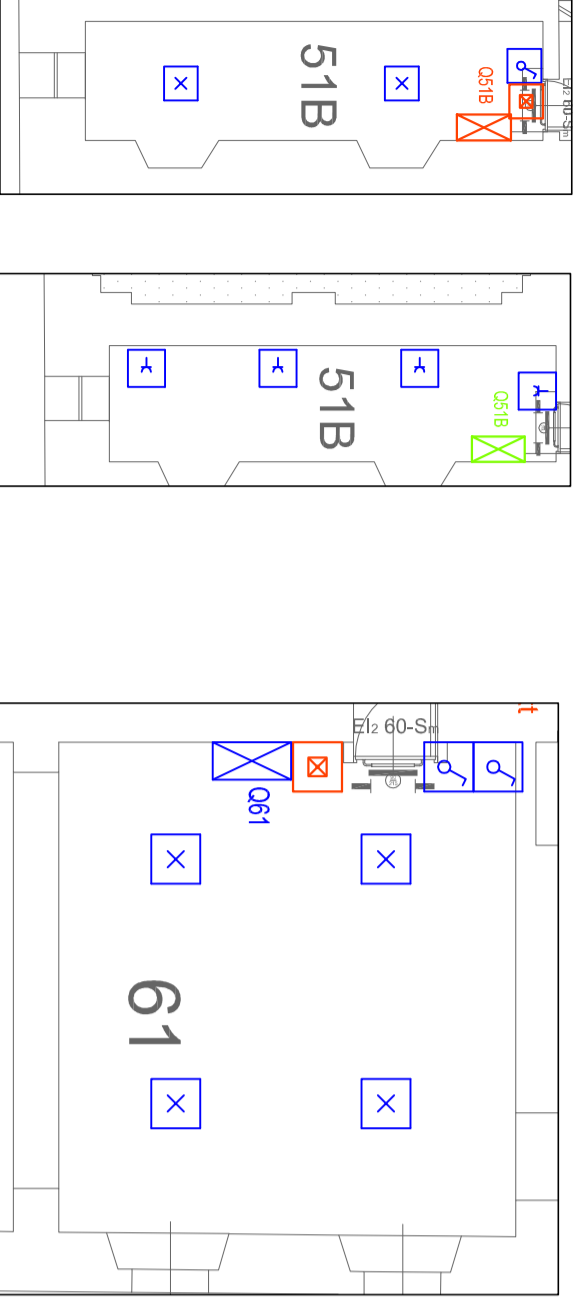
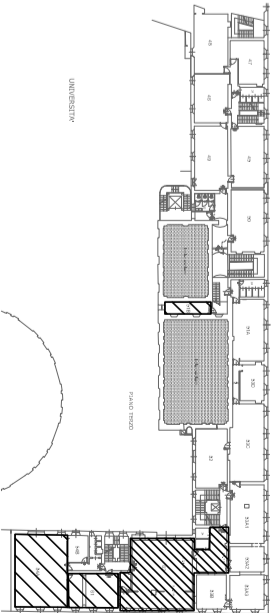
61



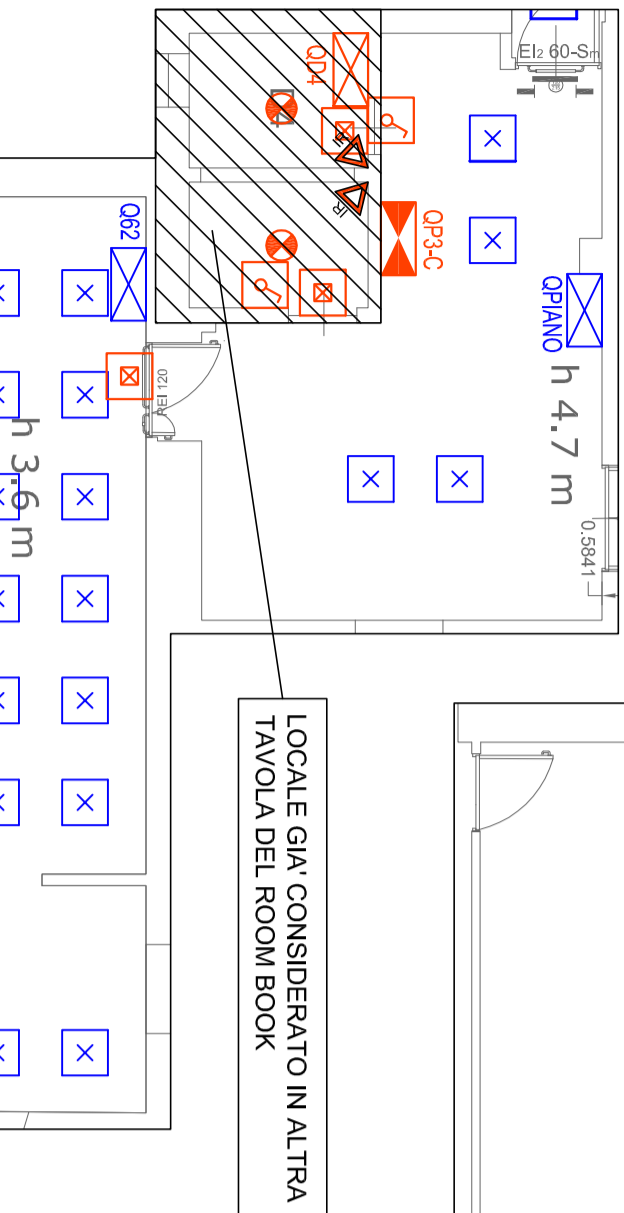
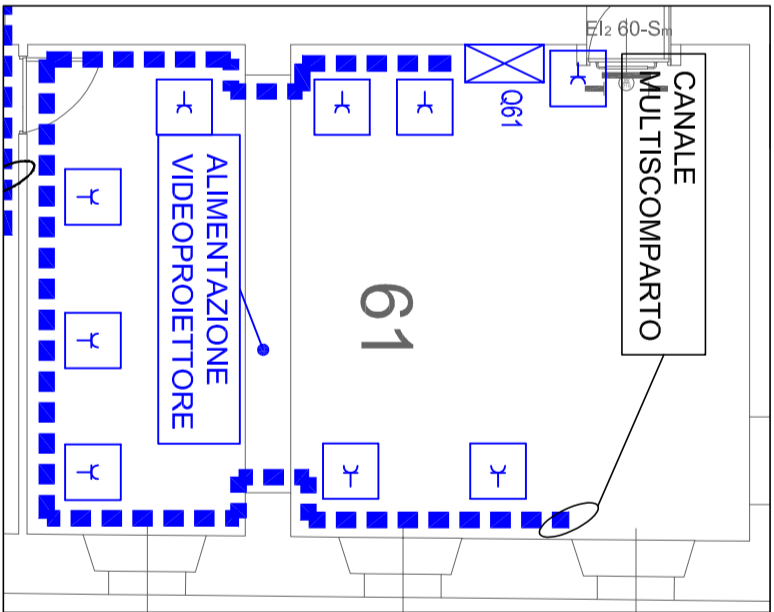
54A



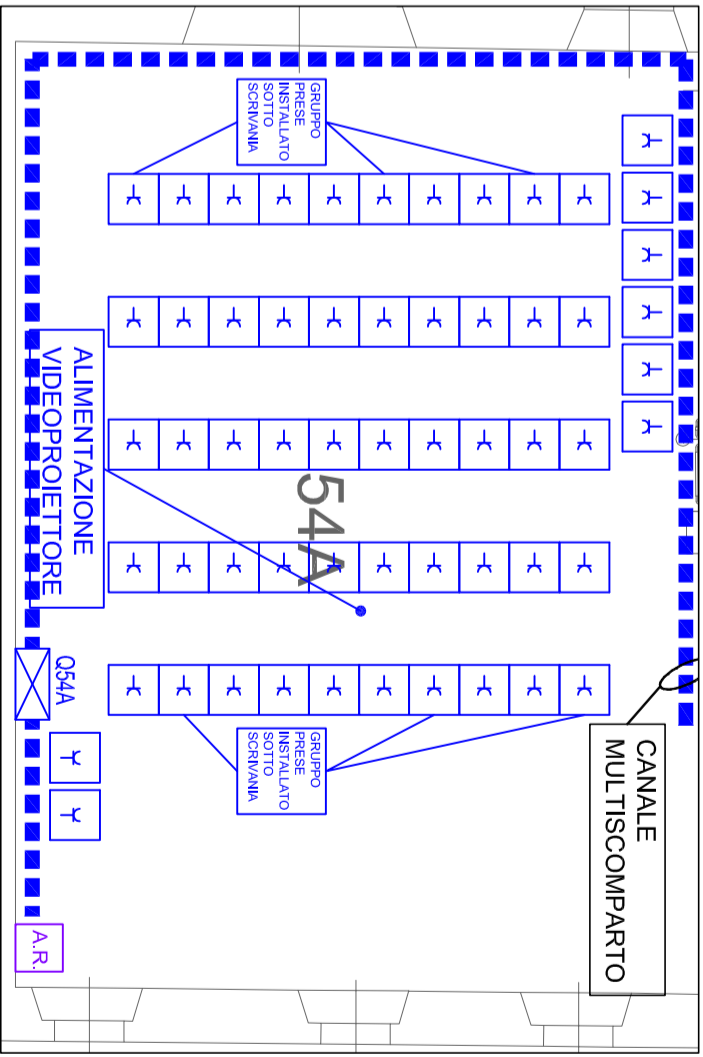
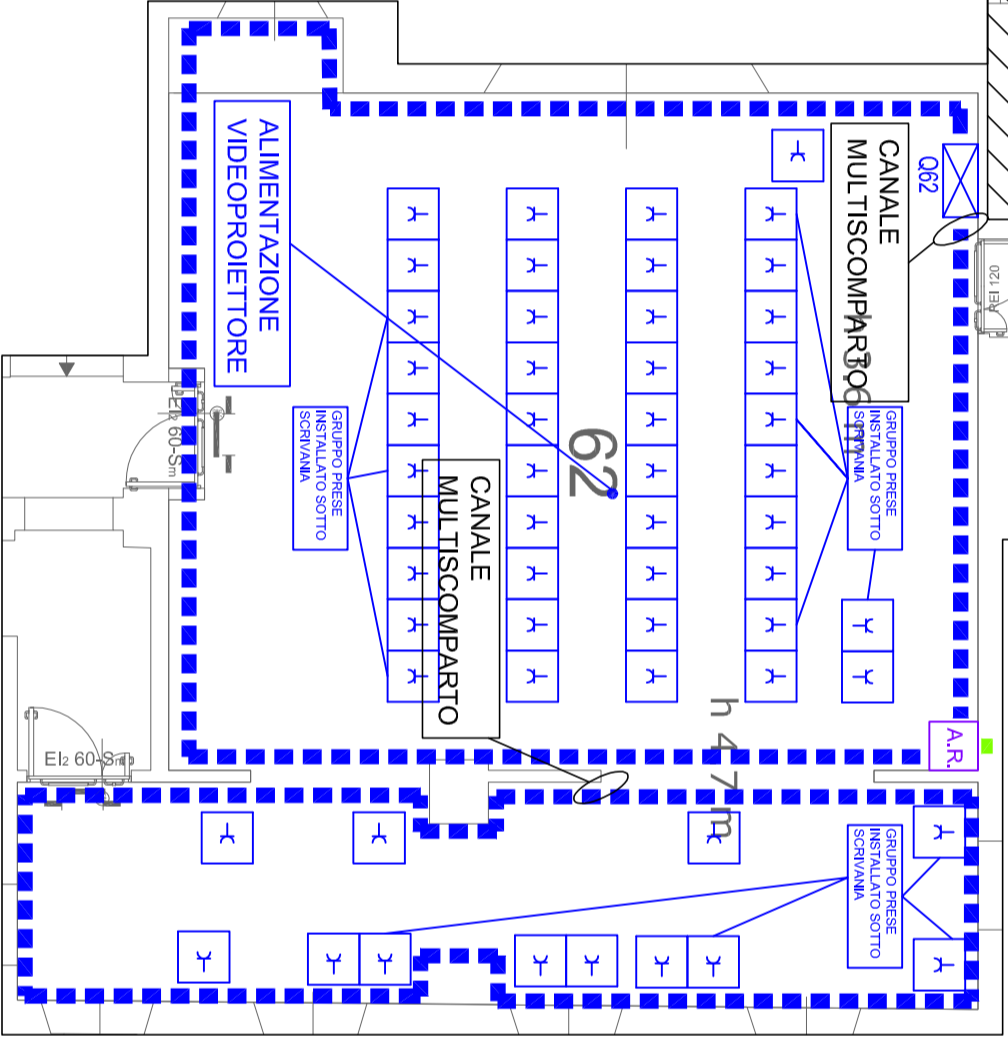
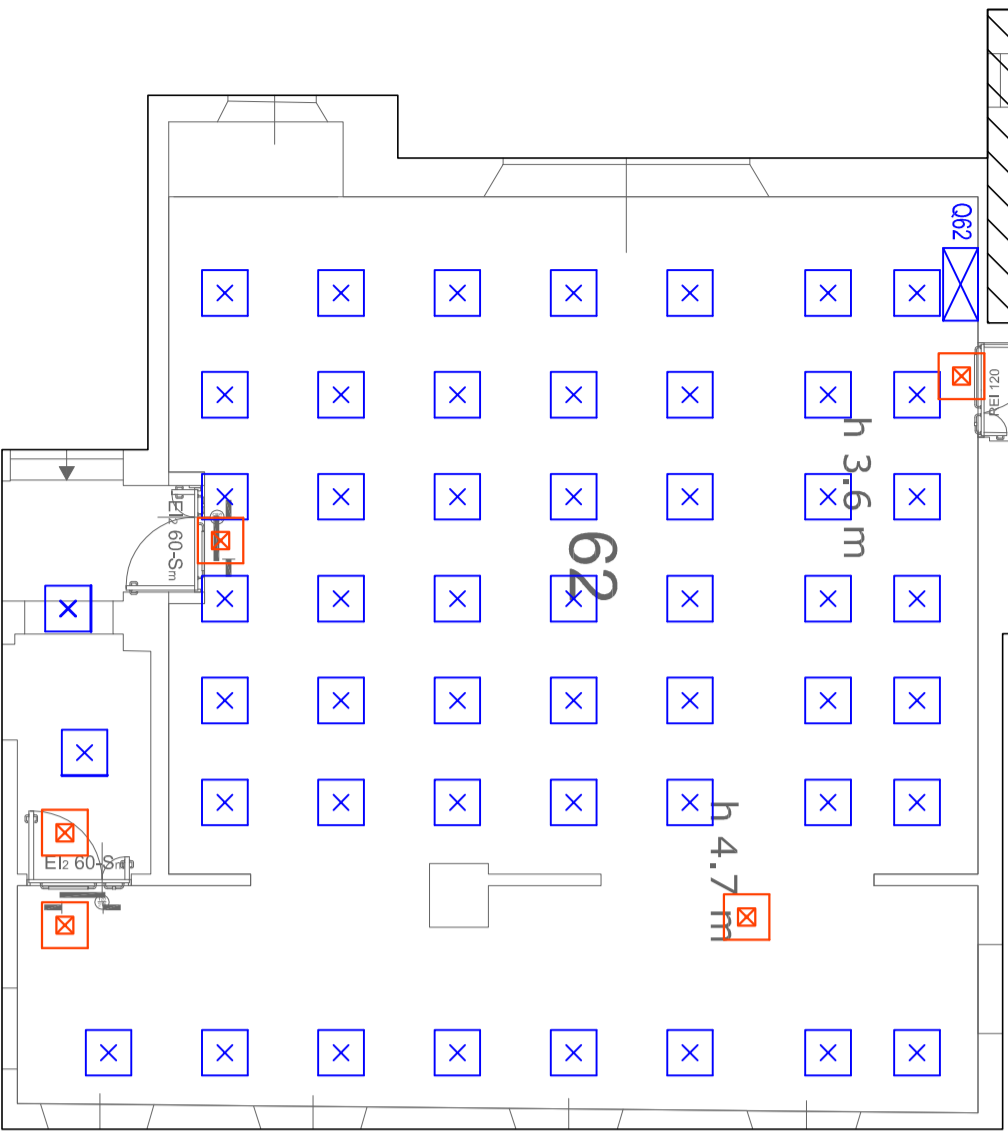
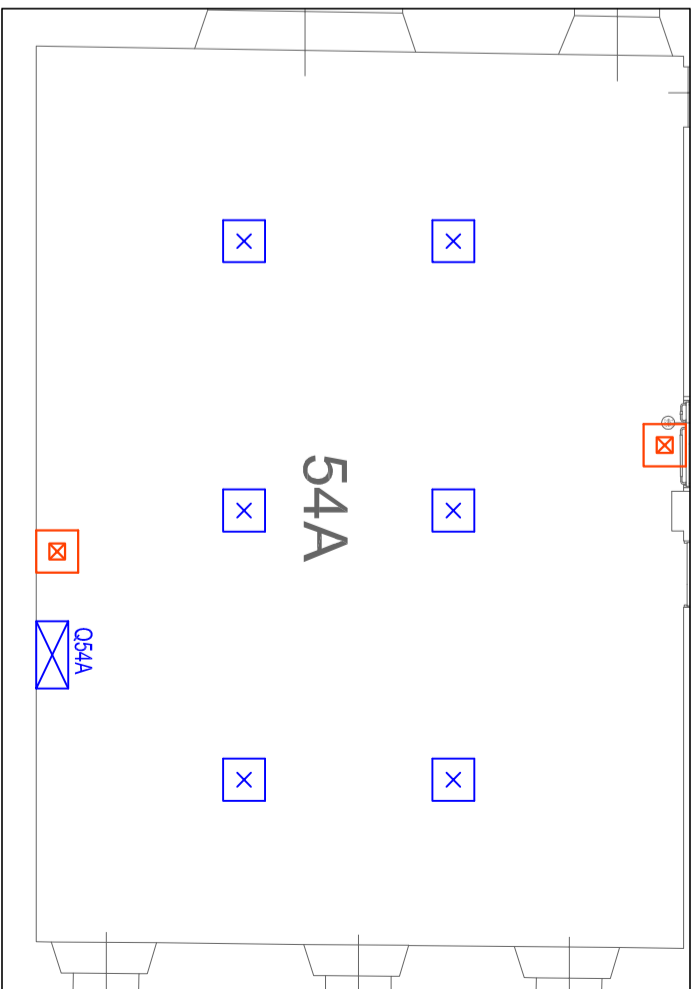
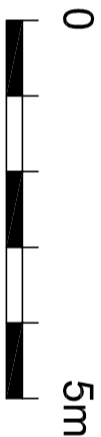
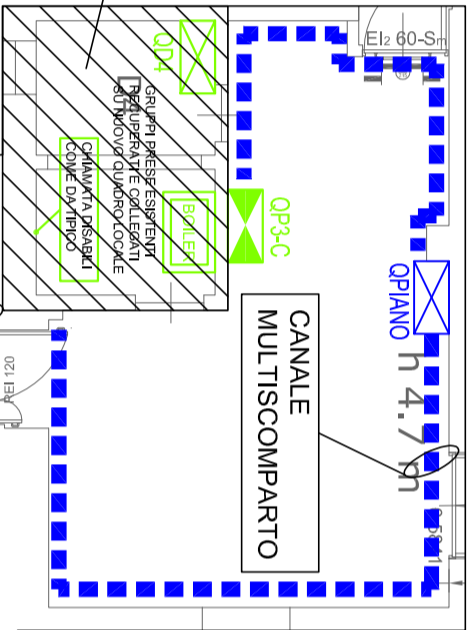
KEY PLAN



62

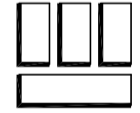


LOCALE GIÀ CONSIDERATO IN ALTRA TAVOLA DEL ROOM BOOK



LEGENDA SIMBOLI	
SIMBOLO	DESCRIZIONE
	Apparecchio Illuminante per illuminazione di sicurezza a controllo radio dotato di trasformazione integrata, sorgente luminosa a LED equivalente flusso 24W, flusso luminoso non inferiore a 550 lm, modello funzionamento SE
	Rafforzamento apparecchio Illuminante esistente
	Gruppo prese esistenti
	Apparecchio Illuminante esistente
	Punto di comando illuminazione esistente
	Canale multiscoperto esistente
	Canale multiscoperto (vedi esempio)
	Quotiere elettrico

ADEGUAMENTO IMPIANTI ELETTRICI ACCADEMIA ALBERTINA
PIANO TERZO - LOCALI 51B_54A_61_62 - Locali recentemente ristrutturati



s.r.l. Engineering Service
Via Treviso, 12
10144 TORINO

STUDIO	0748	DATA	Maggio 2017
FILE	170748_E_004_p3-005_p3	ELAB.	
TAVOLA:	E_010_p3_51B_54A_61_62	FOGLIO	1
		SEGUE	